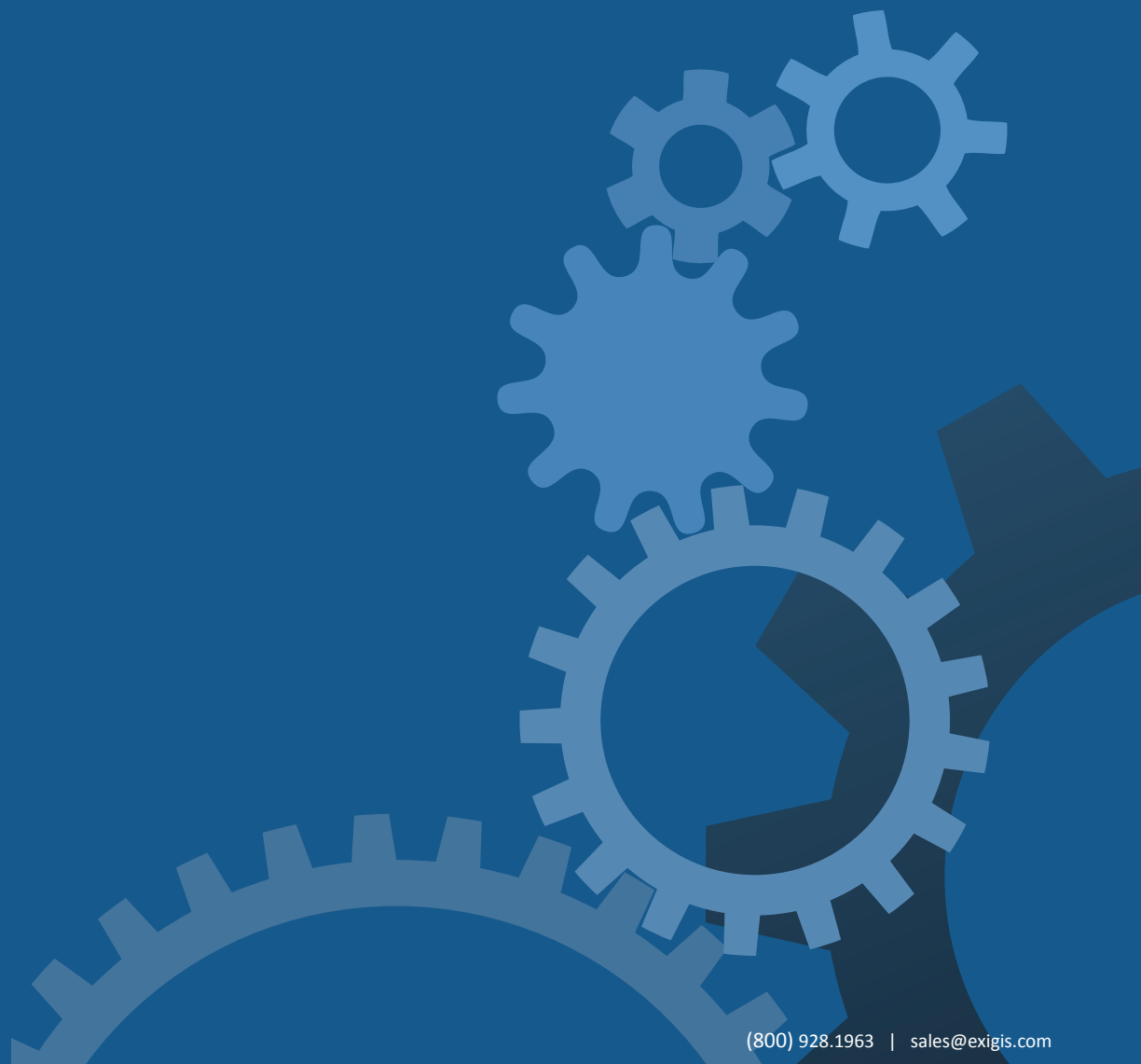


EXIGIS

WORLD-CLASS RISK MANAGEMENT SOFTWARE
FOR THE PUBLIC SECTOR, BY PUBLIC SECTOR EXPERTS




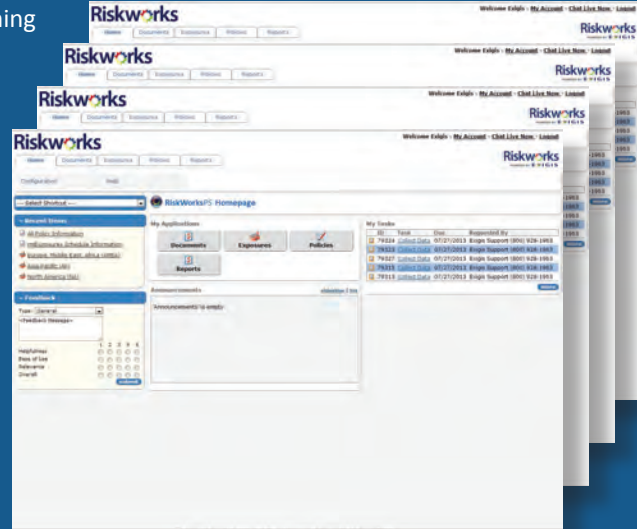
EXIGIS RiskWorksPS® is the only multi-application cloud-based Risk Management Operating System® developed specifically for the needs of public sector risk pools and individual self-insureds.

OVERVIEW OF MODULES AND COMPONENTS

RiskWorksPS streamlines the most paper-laden, resource-intensive, and time-consuming activities associated with the data validation and insurance renewal processes:

- ❖ Exposure Data Management and Values Collection
- ❖ Insurance Policy Administration
- ❖ Knowledge Management
- ❖ Process Reporting and Analytics

RiskWorksPS includes four discrete application modules configured specifically for the public sector. Each module includes a comprehensive library of adaptable Exposure Schedules, Special Risk Questionnaires, Coverage Lines, and Reports which were developed and refined in consultation with leading industry and public sector subject matter experts. Simply choose the templates you need. - 

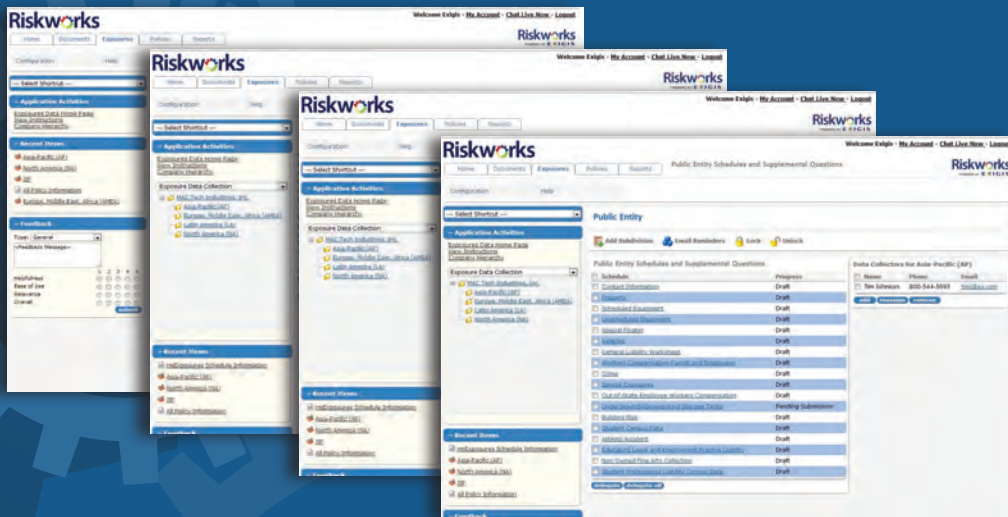


Start-to-finish implementation of RiskWorksPS in fewer than **four weeks** with standardized **monthly fees of \$ 2,500.**

rm.Exposures®

RiskWorksPS rm.Exposures is a multifunction data collection and validation application designed to automate the request, notification, tracking (follow-up), submission/validation, aggregation, and reporting of underwriting information, exposure data and renewal values.

- ❖ Flexible hierarchies, workflows and business rules are designed to conform to the needs of your organization
- ❖ Standardized data fields, formatting and reporting ensures data integrity and consistency
- ❖ Point-and-click task delegation assigns users tasks and automatically issues notifications via email
- ❖ Integrated follow-ups, reminders and escalations alert users of incomplete tasks and approaching deadlines
- ❖ Automated benchmarking of data and comparison of year-over-year values to identify changes and potential discrepancies
- ❖ Integrated exception review process routes changes for additional review and approval
- ❖ Easily import values from third parties such as property appraisers and payroll auditors
- ❖ Upload and track supporting documentation by Schedule or Questionnaire including photos, spreadsheets, schematics, etc.
- ❖ Searchable audit function automatically records activity and amendments to Schedules and Questionnaires



Standard Templates: Choose from a comprehensive library of **40+** standardized Exposure Schedules and supplemental Special Risk Questionnaires.

Exposure Data Schedules:

- 1. Contact Information
- 2. Property
- 3. Scheduled Equipment
- 4. Unscheduled Equipment
- 5. Special Floater
- 6. Vehicles
- 7. General Liability Worksheet
- 8. Workers' Compensation Payroll and Employees
- 9. Crime
- 10. Special Exposures

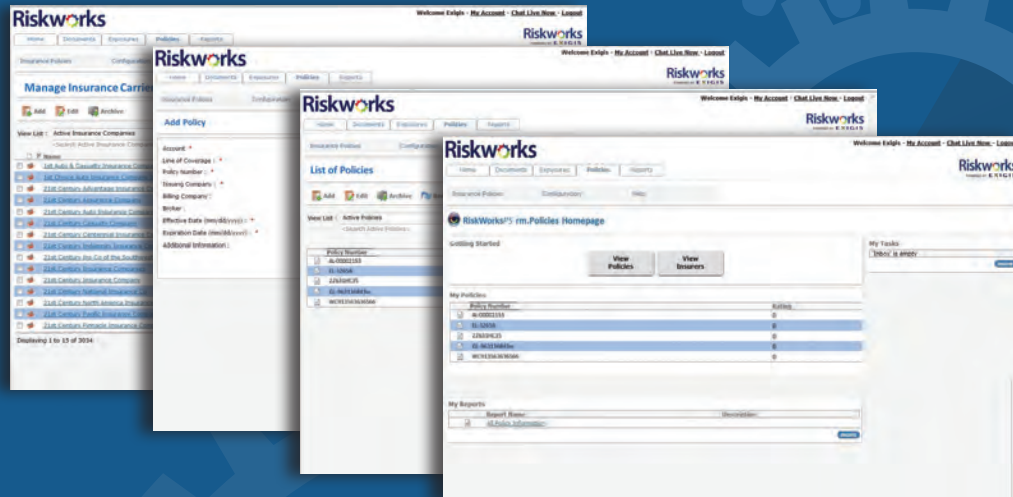
Special Risk Questionnaires:

- a. Skateboard Parks
- b. Wind Turbine
- c. Solar Panel
- d. Electrical Utility
- e. Public Sewer
- f. Water Utility
- g. Waterfront
- h. Dams, Bridges and Reservoirs
- i. Landfill, Dump and Refuse Site
- j. Geothermal [Equipment Breakdown]
- k. Day Care
- l. Fire, Rescue, and Ambulance
- m. Owned and Non-Owned Aircraft
- n. Commercial Marine Vessel
- o. Maritime Excess Liability
- p. Out-of-State Employee Workers' Compensation
- q. Underground/Aboveground Storage Tanks
- r. Builders Risk
- s. Security and Privacy Insurance
- t. Fiduciary
- u. Law Enforcement Liability
- v. Student Accident Census Data
- w. Athletic Accident
- x. Educators Legal and Employment Practices Liability
- y. International Travel and Fixed Base Foreign Operations
- z. Non-Owned Fine Arts Collection
- aa. Broadcasting/Media
- bb. Allied Health
- cc. Inmate Medical Insurance
- dd. Medical/Counseling
- ee. Public Officials and Employment Practices
- ff. Hospital Professional, General, and Umbrella/Excess Liability

rm.Policies®

RiskWorksPS rm.Policies is a workflow driven insurance policy management application enabling the tracking, task assignment, renewal and storage of insurance policies and related documents such as quotes, binders, and endorsements.

- 🔗 Start-to-finish automation of Insurance Policy renewal workflows across Coverage Lines
- 🔗 Point-and-click task delegation assigns users tasks and automatically issues notifications via email
- 🔗 Integrated follow-ups, reminders and escalations alert users of incomplete tasks and pending deadlines
- 🔗 Manage and document process authorizations and approvals
- 🔗 Upload and manage supporting documentation including quotes, binders, endorsements, etc.



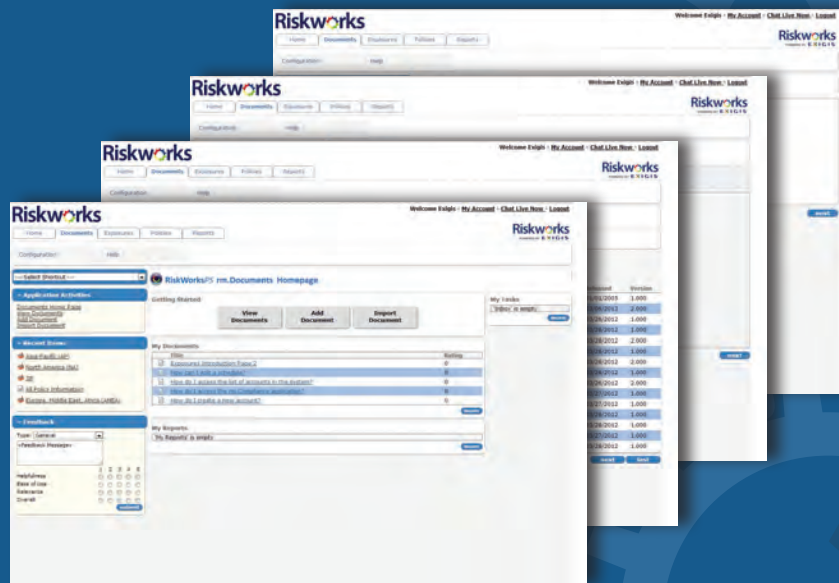
Standard Templates: Choose from comprehensive library of **25** standardized Insurance Policy and Coverage Line templates.

1. Allied Health
2. Athletic Accident
3. Automobile
4. Aviation
5. Builders Risk
6. Business Interruption
7. Crime
8. Cyber Liability
9. Educators Legal Liability
10. Equipment Breakdown/Boiler and Machinery
11. Errors and Omissions
12. Excess/Umbrella
13. Fine Arts
14. General Liability
15. Inland Marine [Mobile Equipment, etc.]
16. International Travel and Fixed Base Foreign Operations
17. Law Enforcement Liability
18. Marine
19. Medical Professional
20. Pollution Liability
21. Property
22. Public Officials Liability
23. Student Accident
24. Underground and Aboveground Storage Tanks
25. Workers' Compensation/Employer's Liability

rm.Documents®

RiskWorksPS rm.Documents is a flexible content and knowledge management application providing publishing, editing, distribution, and versioning tools for documents and other related content.

- ❖ Publish, edit, and distribute content and multi-format documents across your organization: avi, doc, docx, gif, htm, html, jpg, mdb, pdf, ppt, pptx, rtf, txt, wmv, xls, xlsx, or zip
- ❖ Organize content and documents by type, audience, author, etc.
- ❖ Create and manage a searchable library of 'Frequently Asked Questions' (FAQs)
- ❖ Automated document versioning assigns iteration ID and tracks revision history, author, and time/date
- ❖ Content subscription feature enables users to sign up for news alerts by topic or author
- ❖ Integrated document and content 'scoring' monitors usage and user feedback to gauge relevance



rm.Reports®

RiskWorksPS rm.Reports is an integrated self-service ad-hoc reporting and analytics tool providing real-time access to business intelligence and process information across the organization.

- 🌀 On-demand access to standard preconfigured reports and user-configured ad-hoc reports
- 🌀 Integrated six-step report wizard to create and run real-time customized reports across modules
- 🌀 Easily organize and sort report data and apply analytical filters
- 🌀 Save reports to desktop or easily export to MS Excel, MS Word, Adobe PDF or CSV formats

Standard Templates: In addition to ad-hoc reports, choose from a comprehensive library of pre-configured system and application module report templates.

1. System (General)

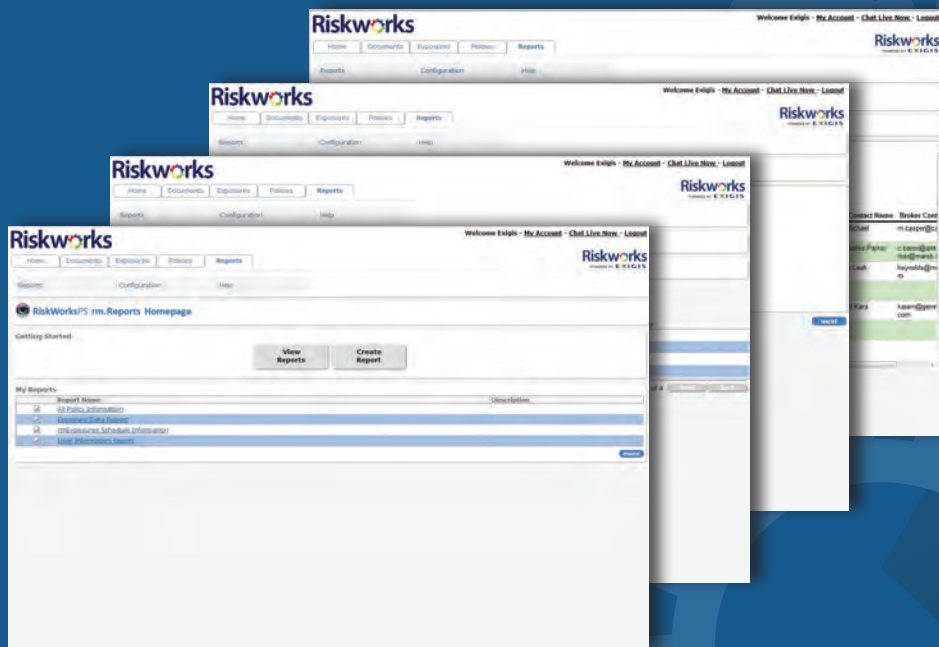
- User Activity Reports
- Session Information Reports

2. rm.Exposures

- Year-Over-Year Comparison Reports showing data and values cross the organization
- Schedule Level Exposure Reports
- Questionnaire Level Risk Reports
- Data Collection Status and Progress Reports

3. rm.Policies

- Coverage Line Reports
- Insurance Policy Reports
- Program/Policy Renewal Status and Progress Reports





ABOUT EXIGIS

EXIGIS, LLC. 589 Eighth Avenue, Floor 8, New York, NY 10018

EXIGIS, LLC. is the leading provider of process automation software and services for risk management, insurance, and trade finance. Founded in 2002, EXIGIS is an independent, privately owned solutions provider headquartered in New York, NY with an office in San Francisco, CA. EXIGIS is a certified **Minority Owned Business Enterprise (MBE)**.

Contact EXIGIS today to **put RiskWorksPS® to work for your organization** at (800) 928.1963 or sales@exigis.com.

Visit us anytime online at exigis.com.

EXIGIS